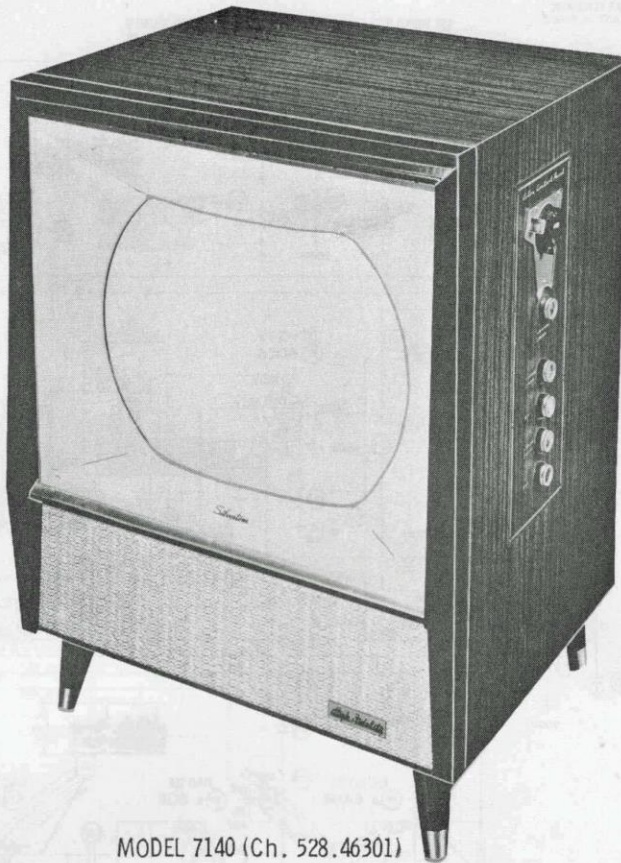




SILVERTONE MODELS 7138, 7140, 7142 (Ch. 528.46300, 528.46301)



MODEL 7140 (Ch. 528.46301)

SILVERTONE MODELS 7138, 7140, 7142 (Ch. 528.46300, 528.46301)

TRADE NAME	Silvertone	MODELS	CHASSIS
		7140, 7142	528.46300
		7138, 7140, 7142	528.46301
SUPPLIER	Sears, Roebuck & Co., 925 S. Homan Ave., Chicago, Illinois		
TYPE SET	Color Television Receiver		
TUBES	Twenty-six		
POWER SUPPLY	110-120 Volts AC, 60 Cycle	RATING	315 Watts, 3.1 Amp. @ 117 Volts AC
TUNING RANGE	Channels 2 thru 13 VHF, Video IF 45.75MC, Sound IF 41.25MC (Intercarrier)		

INDEX

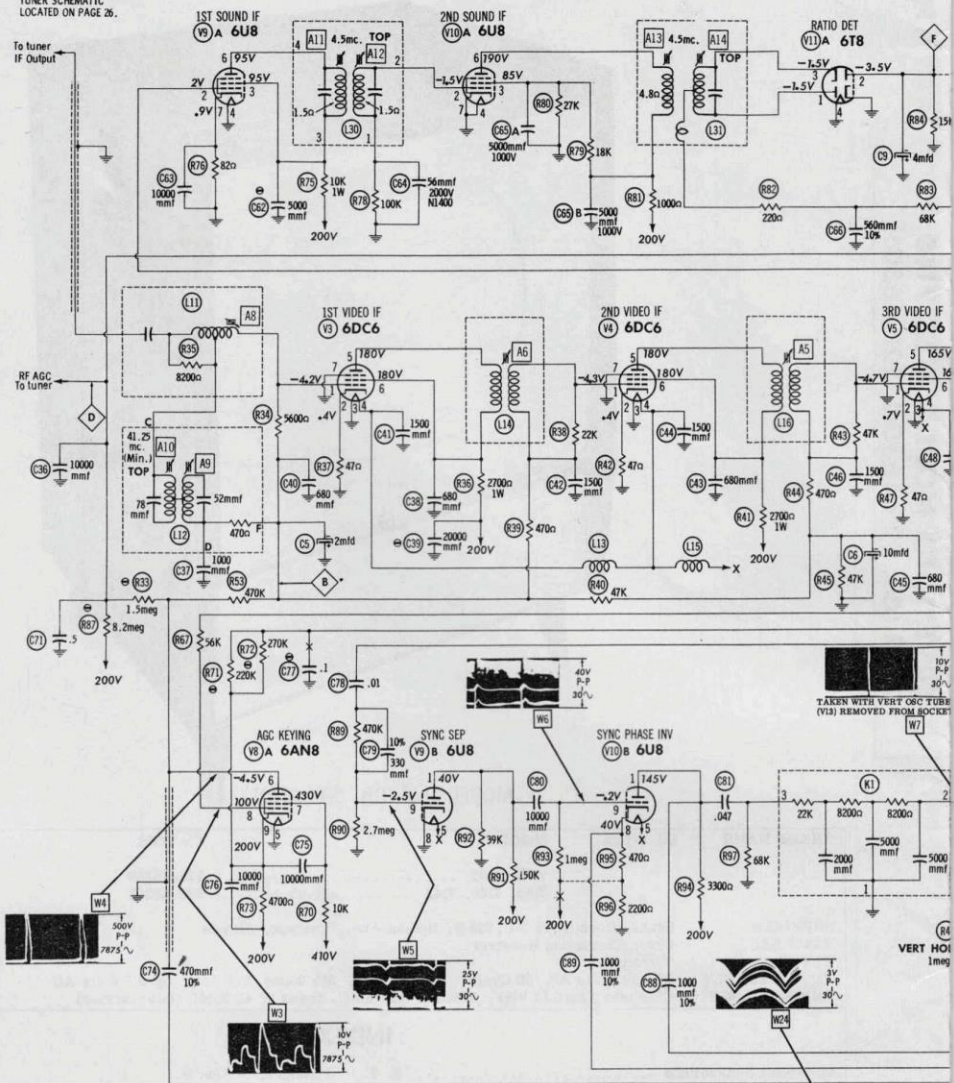
Alignment Instructions	6, 7	Photographs (Con't)	
Block Diagram	3	Control Panel-Rear View	20
Disassembly Instructions	19	RF Tuner	8
Miscellaneous Adjustments	5	Resistor Identification	12, 13, 16, 17
Parts List and Descriptions	21 thru 25	Trans., Inductor & Alignment Identification	14, 15
Photographs		Resistance Measurements	10
Cabinet-Rear View	19	Schematic (Tuner)	26
Capacitor Identification	27, 28	Schematic (TV)	2
Chassis-Top View	4, 9	Tube Placement Chart (Bottom View)	18
		Tube Placement Chart (Top View)	11

HOWARD W. SAMS & CO., INC. • Indianapolis 5, Indiana

The listing of any available replacement part herein does not constitute in any case a recommendation, warranty or guaranty by Howard W. Sams & Co., Inc., as to the quality and suitability of such replacement part. The numbers of these parts have been compiled from information furnished to Howard W. Sams & Co., Inc., by the manufacturers of H168

the particular type of replacement part listed. Reproduction or use, without express permission, of editorial or pictorial content, in any manner, is prohibited. No patent liability is assumed with respect to the use of the information contained herein. © 1958 Howard W. Sams & Co., Inc., Indianapolis 5, Indiana. Printed in U.S. of America

TUNER SCHEMATIC
LOCATED ON PAGE 26.



MEASURED WITH HIGH VOLTAGE PROBE.

SEE PARTS LIST FOR ALTERNATE
VALUE OR APPLICATION

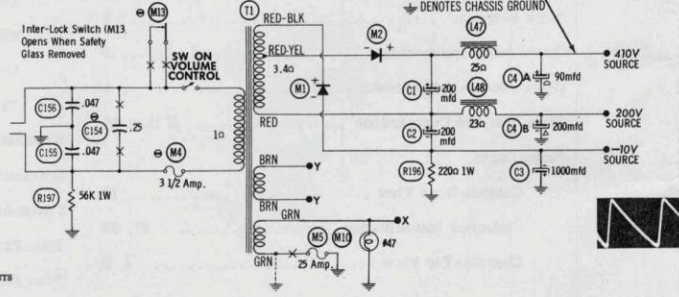
DC COIL RESISTANCE VALUES UNDER ONE OHM
NOT SHOWN ON SCHEMATIC DIAGRAM

ARROWS ON CONTROLS INDICATE CLOCKWISE ROTATION
(CONTROL VIEWED FROM SHAFT END)

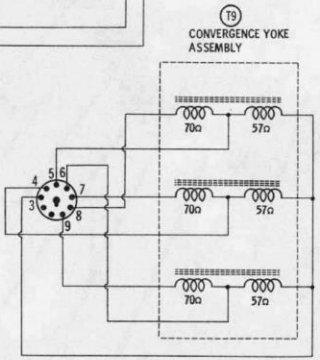
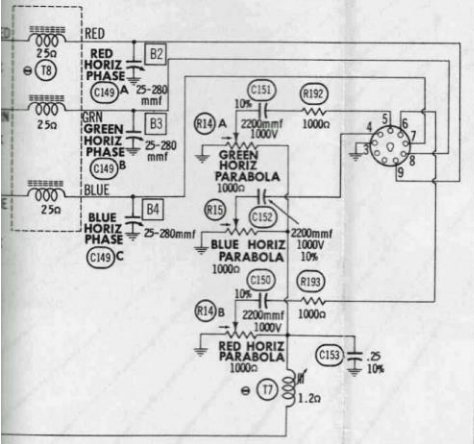
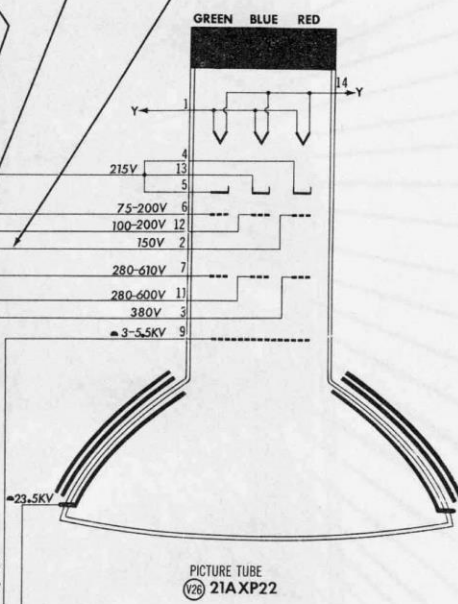
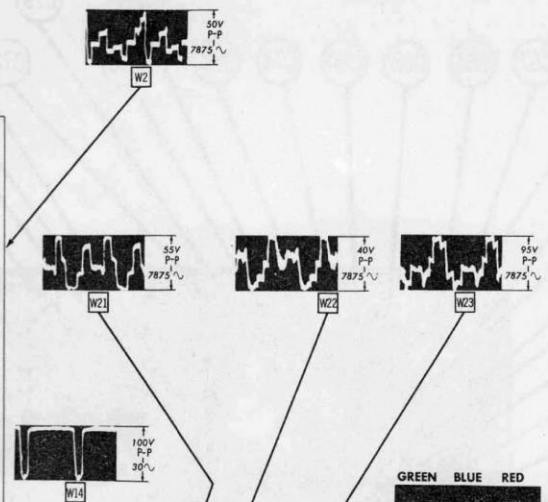
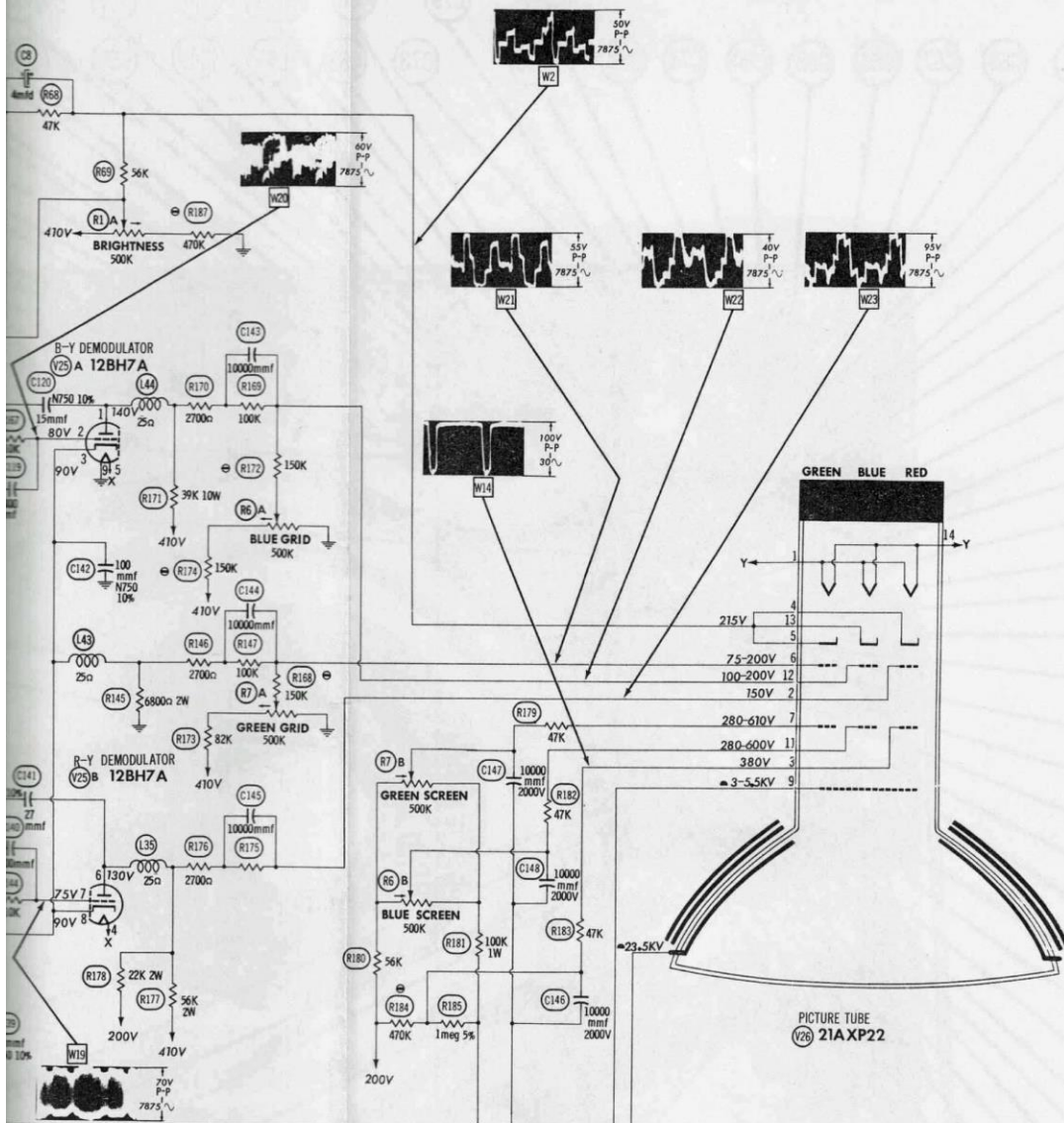
ALL WAVEFORMS TAKEN WITH A WIDE
BAND OSCILLOSCOPE.

WAVEFORMS TAKEN WITH ALL CONTROLS AND ADJUSTMENTS
SET TO PRODUCE PROPER PRESENTATION FROM A FULLY
SATURATED COLOR-BAR GENERATOR CONSISTING OF RED,
YELLOW, GREEN, CYAN, BLUE, MAGENTA, AND WHITE.

- DC voltage measurements taken with vacuum tube voltmeter; AC voltage measured at 1,000 ohms per volt.
- Pin numbers are counted in a clockwise direction on bottom of socket.
- Measured values are from socket pins to common negative unless other was stated.
- Line voltage maintained at 117 volts for voltage readings.
- All controls set for normal operation; no signal applied.



A PHOTOFAC STANDARD NOTATION SCHEMATIC
Howard W. Sans & Co., Inc. 1958



SILVERTONE MODELS 7138, 7140, 7142 (Ch. 528.46300, 528.46301)